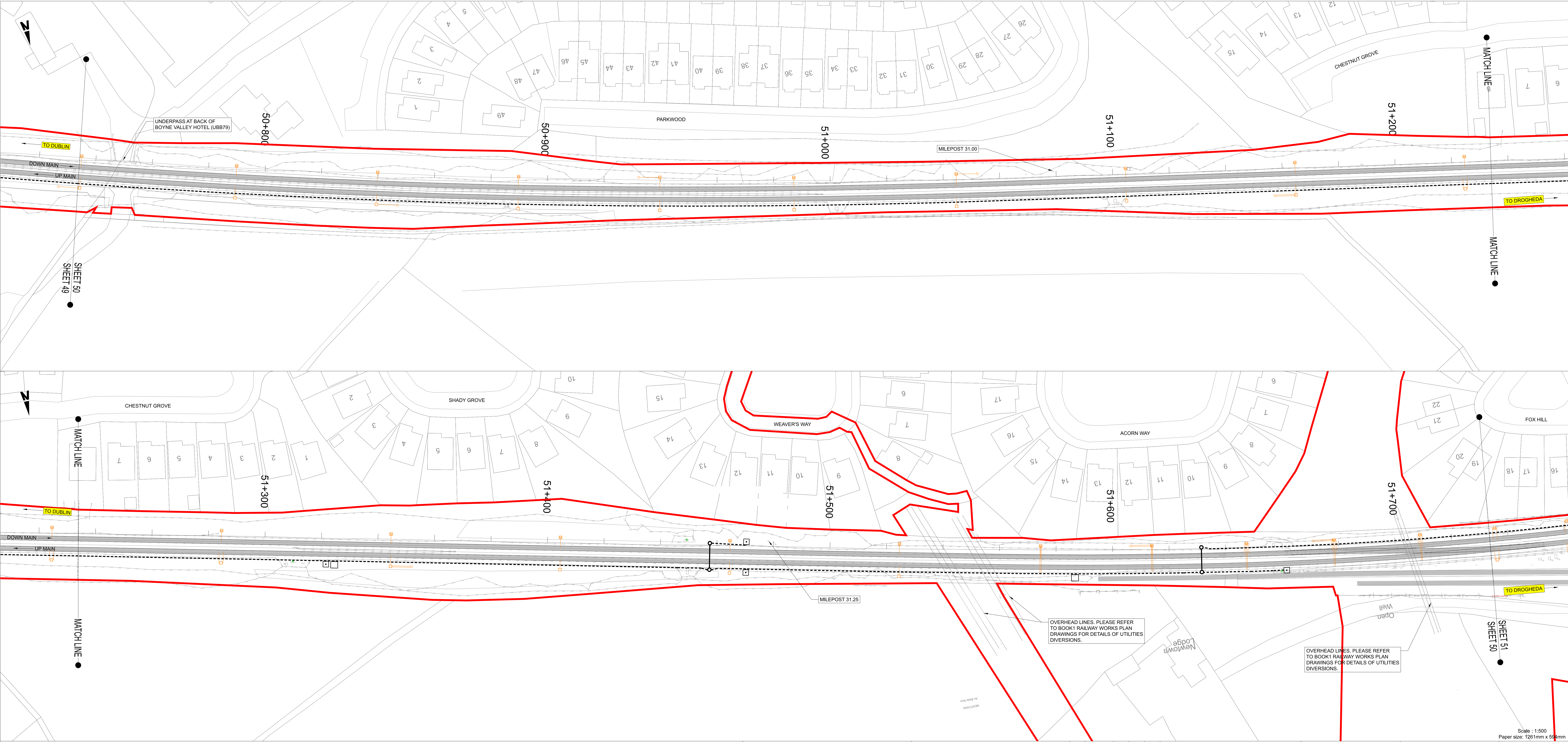


.....

LINEAR WORKS

**Zone E: Drogheda Station and
surrounds**

.....

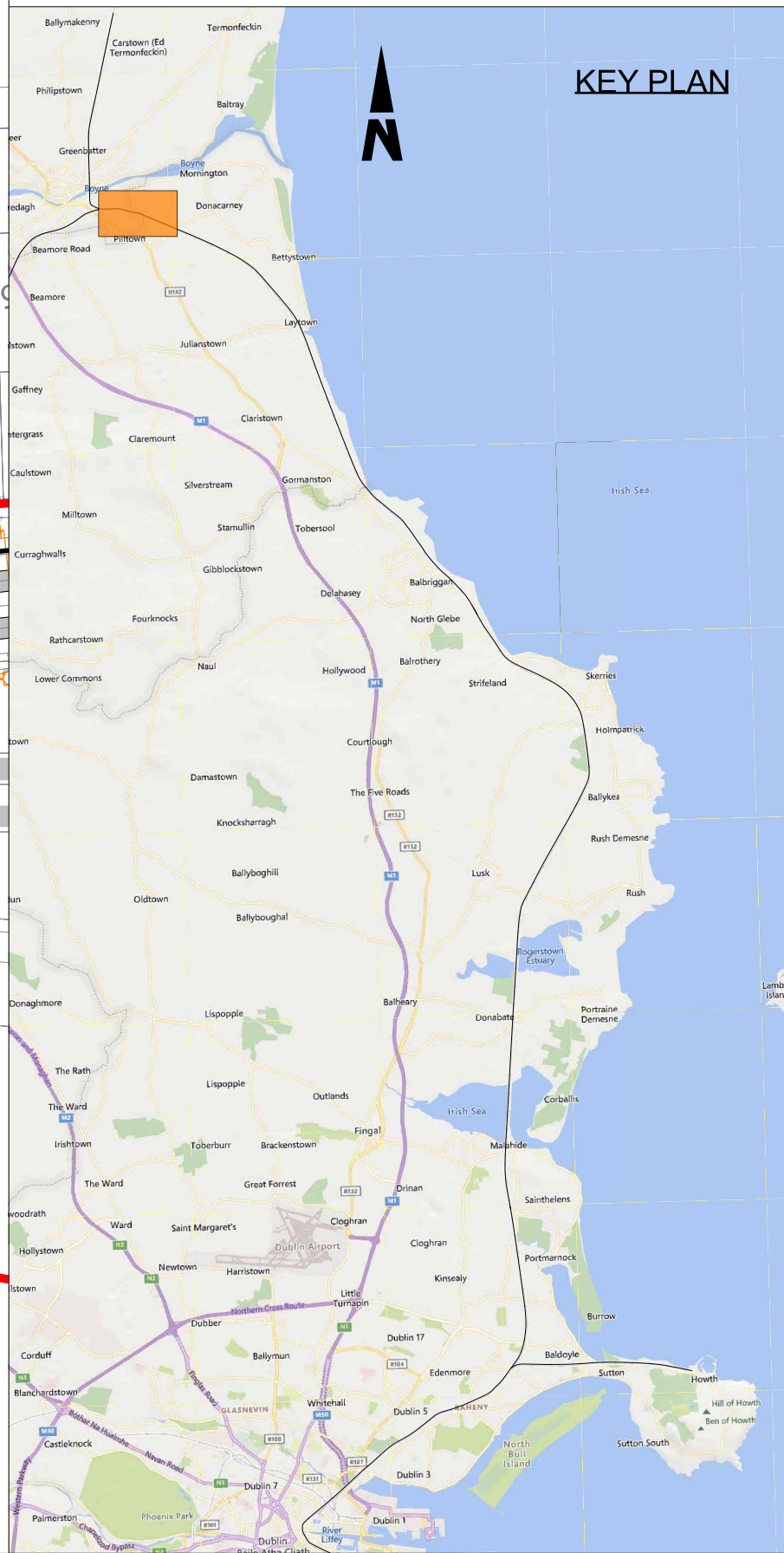


NOTES

- 1. DO NOT SCALE FROM THIS DRAWING.
- 2. THIS DRAWING SHALL BE READ IN CONJUNCTION WITH THE OTHER DRAWINGS INCLUDED IN THIS SERIES.
- 3. LOCATION OF ALL BURIED SERVICES TO BE CONFIRMED PRIOR TO CONSTRUCTION.
- 3. ALL DIMENSIONS ARE IN METERS, UNLESS OTHERWISE STATED.
- 4. ALL CHAINAGES ARE IN KILOMETERS.
- 5. DRAWING TO BE PRINTED IN COLOUR.
- 6. ALL LEVELS ARE IN METERS ABOVE ORDNANCE DATUM (MOD) UNLESS OTHERWISE STATED.
- 7. THE DART+ COASTAL NORTH PROJECT IS POSITIONED ACCORDING TO THE IRISH TRANSVERSE MERCATOR (ITM) COORDINATE SYSTEM.
- 8. EXISTING TROUGHING TO BE REMOVED POST CONSTRUCTION OF PROPOSED TROUGHING.
- 9. SELECTED INFRASTRUCTURE INTERVENTIONS DRIVING THE LINESIDE CIVILS DESIGN SUCH AS SUBSTATIONS HAVE BEEN SHOWN FOR INFORMATION ON THESE LINEAR WORKS PLANS. FOR A FULL PICTURE OF ALL INTERVENTIONS ACROSS THE PROJECT, PLEASE REFER TO THE BOOK 1 RAILWAY WORKS PLANS.
- 10. OHLE STRUCTURES ARE SHOWN AT INDICATIVE LOCATIONS AT A SPACING OF TYPICALLY 40m TO 50m. OHLE WIRES WILL SPAN BETWEEN THE STRUCTURES.

LEGEND

- DEVELOPMENT BOUNDARY
- EXISTING ELEMENTS
- ELEMENTS TO BE REMOVED
- PROPOSED UNDER TRACK CROSSING (UTX)
- - - PROPOSED TROUGHING
- - - PROPOSED ELEVATED TROUGHING
- - - PROPOSED FENCING
- CABLE DUCTS IN PLATFORM
- PROPOSED OVERHEAD LINE EQUIPMENT
- TRACKWORK (EXISTING AND PROPOSED)
- ▨ PLATFORM MODIFICATIONS
- PROPOSED SIGNAL
- PROPOSED LOCATION CASE



Disclaimer

© Irish Rail (2023). This drawing is confidential and the copyright in it is owned by Irish Rail. This drawing must not be either loaned, copied or otherwise reproduced in whole or in part or used for any purpose without the prior permission of Irish Rail.

© OpenStreetMap contributors

© Ordnance Survey Ireland and Government of Ireland. All O.S. data used for plans are printed under Copyright Ordnance Survey Ireland 0039723 (OSi Aerial Data or OSi Lidar Data) & 2023/OSi, NMA, 100 (OSi Vector Data). All elevations are in metres and relate to OSi Geoid Model (OSGM02). Main Head is defined by existing Project Control. All Co-ordinates are in Irish Transverse Mercator Grid (ITM) as defined by OSi active GPS station Tallaght College (TLTG).

Tionadail Éireann
Project Includ

2040

Rev	Date	Dm	Chk'd	App'd	Description
P01	12/04/2024	AC	EJ	DB	PLANNING ISSUE

Client

Date

01/06/2023

Project Code

D+WP56

Scale

As shown

Originator Code

ARP

Drawn

AC

Checked

EJ

Approved

DB

QMS Code

280275-00

Engineering Designer

Project Title

DART+ COASTAL NORTH

Drawing Title

LINEAR WORKS

Drawing File Name

D+WP56-ARP-P4-NL-DR-RO-100050

Sheet Number

50 of 58

Status

S3

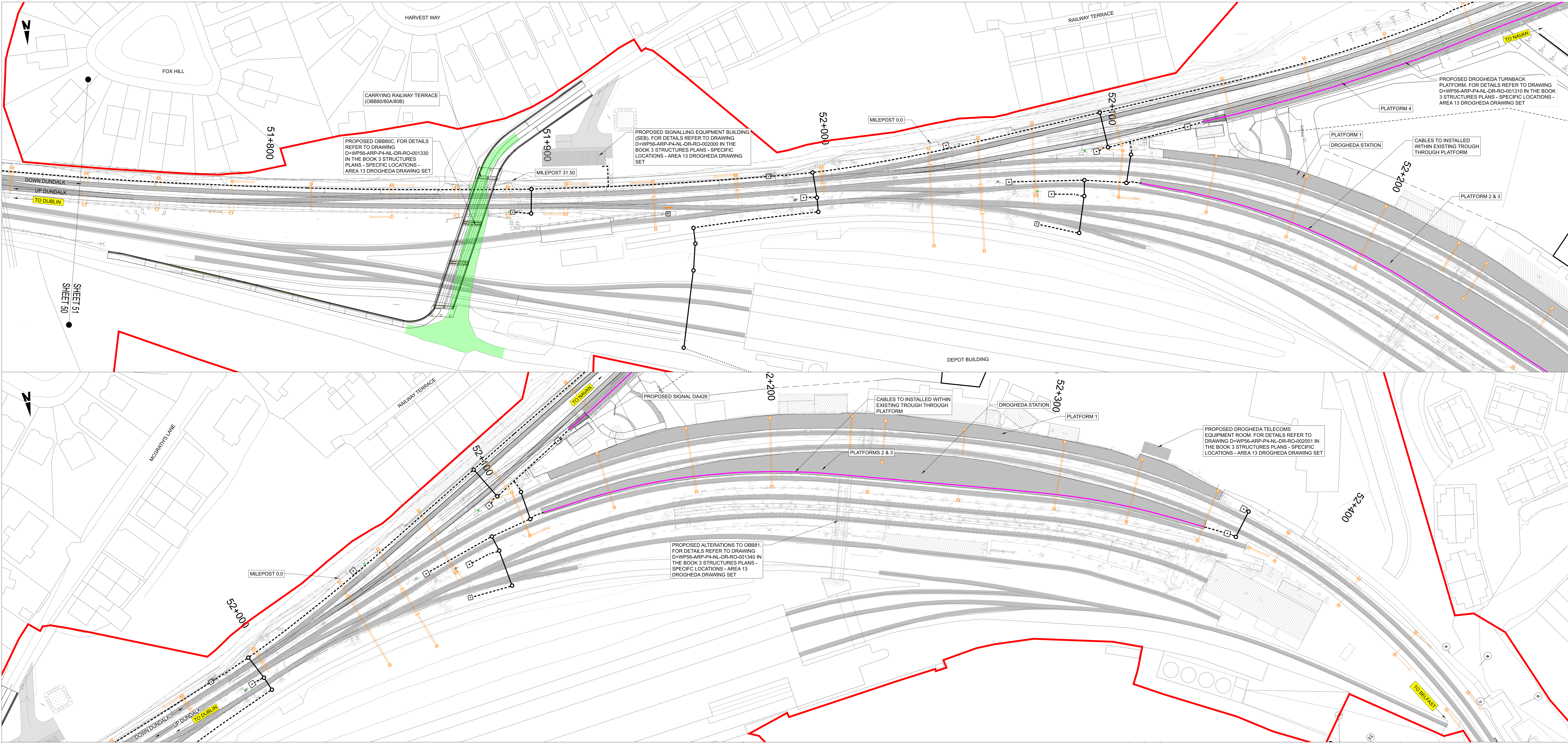
Rev

P01

Scale : 1:500

Paper size: 1261mm x 554mm

DO NOT SCALE USE FIGURED DIMENSIONS ONLY



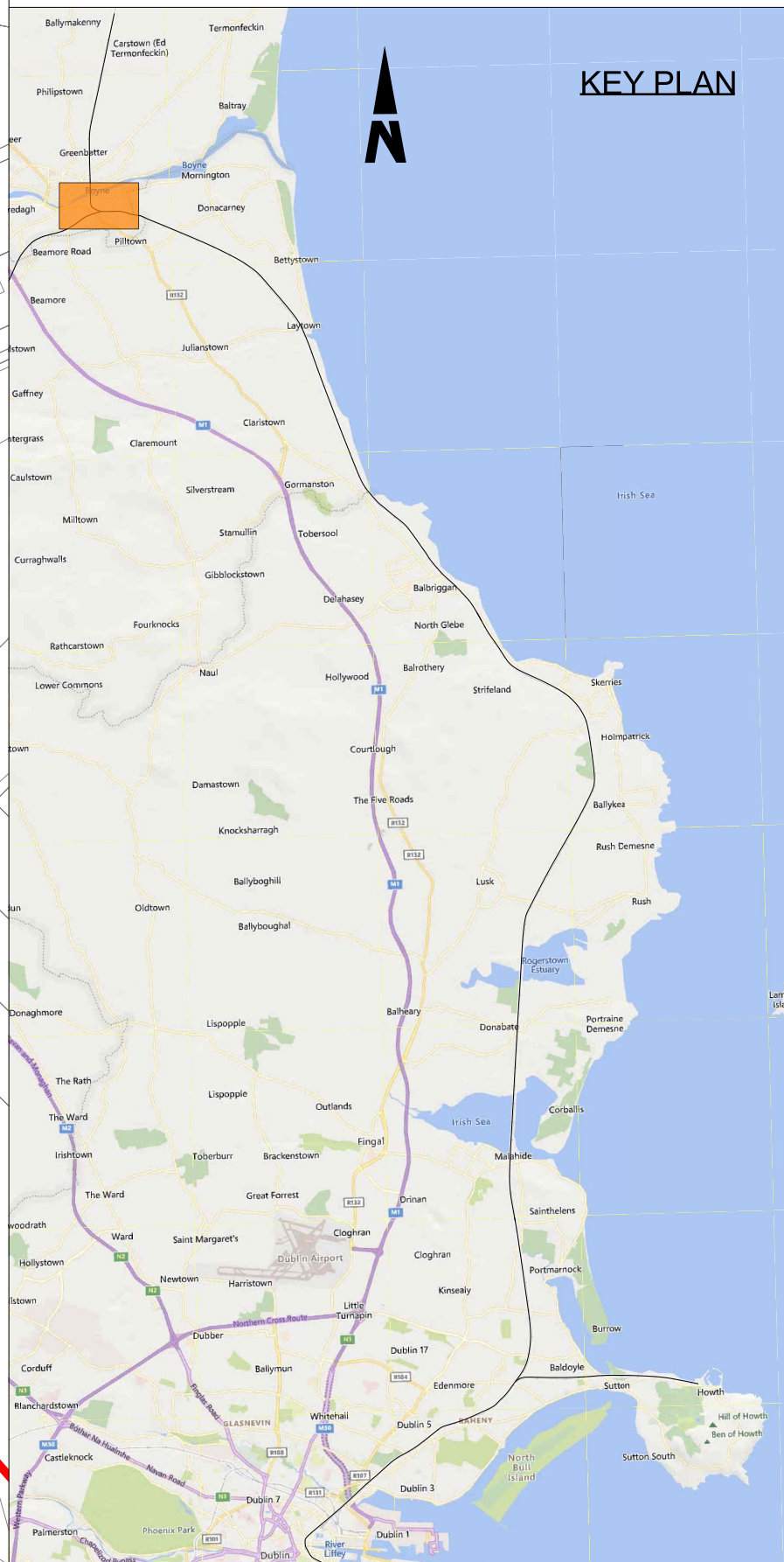
NOTES

1. DO NOT SCALE FROM THIS DRAWING.
2. THIS DRAWING SHALL BE READ IN CONJUNCTION WITH THE OTHER DRAWINGS INCLUDED IN THIS SERIES.
3. LOCATION OF ALL BURIED SERVICES TO BE CONFIRMED PRIOR TO CONSTRUCTION.
4. ALL DIMENSIONS ARE IN METERS, UNLESS OTHERWISE STATED.
5. ALL CHAINAGES ARE IN KILOMETERS.
6. DRAWING TO BE PRINTED IN COLOUR.
7. ALL LEVELS ARE IN METERS ABOVE ORDNANCE DATUM (MOD) UNLESS OTHERWISE STATED.
8. THE DART+ COASTAL NORTH PROJECT IS POSITIONED ACCORDING TO THE IRISH TRANSVERSE MERCATOR (ITM) COORDINATE SYSTEM.
9. EXISTING TROUGHING TO BE REMOVED POST CONSTRUCTION OF PROPOSED TROUGHING.
10. SELECTED INFRASTRUCTURE INTERVENTIONS DRIVING THE LINESIDE CIVILS DESIGN SUCH AS SUBSTATIONS HAVE BEEN SHOWN FOR INFORMATION ON THESE LINEAR WORKS PLANS. FOR A FULL PICTURE OF ALL INTERVENTIONS ACROSS THE PROJECT, PLEASE REFER TO THE BOOK 1 RAILWAY WORKS PLANS.
11. OHLE STRUCTURES ARE SHOWN AT INDICATIVE LOCATIONS AT A SPACING OF TYPICALLY 40m TO 50m. OHLE WIRES WILL SPAN BETWEEN THE STRUCTURES.

LEGEND

- DEVELOPMENT BOUNDARY
- EXISTING ELEMENTS
- ELEMENTS TO BE REMOVED
- PROPOSED UNDER TRACK CROSSING (UTX)
- - - PROPOSED TROUGHING
- - - PROPOSED ELEVATED TROUGHING
- - - PROPOSED FENCING
- CABLE DUCTS IN PLATFORM
- PROPOSED OVERHEAD LINE EQUIPMENT
- TRACKWORK (EXISTING AND PROPOSED)
- ▨ PLATFORM MODIFICATIONS
- PROPOSED SIGNAL
- PROPOSED LOCATION CASE



KEY PLAN



Disclaimer
© Irish Rail (2023). This drawing is confidential and the copyright in it is owned by Irish Rail. This drawing must not be either loaned, copied or otherwise reproduced in whole or in part or used for any purpose without the prior permission of Irish Rail.
© OpenStreetMap contributors
© Ordnance Survey Ireland and Government of Ireland. All O.S. data used for plans are printed under Copyright Ordnance Survey Ireland 0039723 (OSi Aerial Data or OSi Lidar Data) & 2023/OSi NMA 100 (OSi Vector Data). All elevations are in metres and relate to OSi Geoid Height (OSGM02). Main Heat is defined by existing Project Control. All Co-ordinates are in Irish Transverse Mercator Grid (ITM) as defined by OSi active GPS station Tallaght College (TLTG).

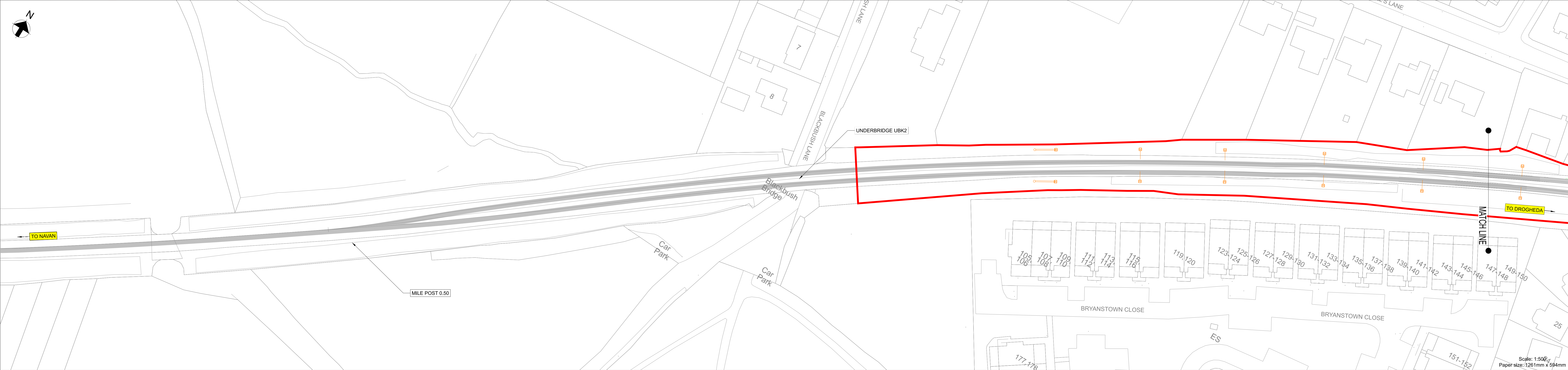
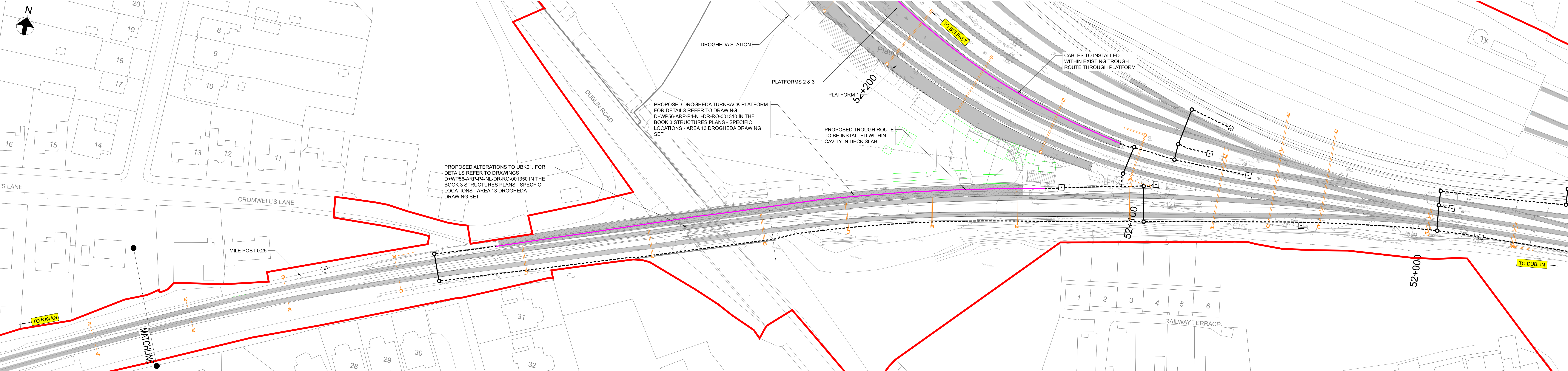


Rev	Date	Dm	Chk'd	App'd	Description
P01	12/04/2024	AC	EJ	DB	PLANNING ISSUE

Client		Engineering Designer		
 Iarnród Éireann Irish Rail				
Date	Scale	Drawn	Checked	Approved
01/06/2023	1:500 at A1 1:1000 at A3	AC	EJ	DB
Project Code	Originator Code	QMS Code		
D+WP56	ARP	280275-00		

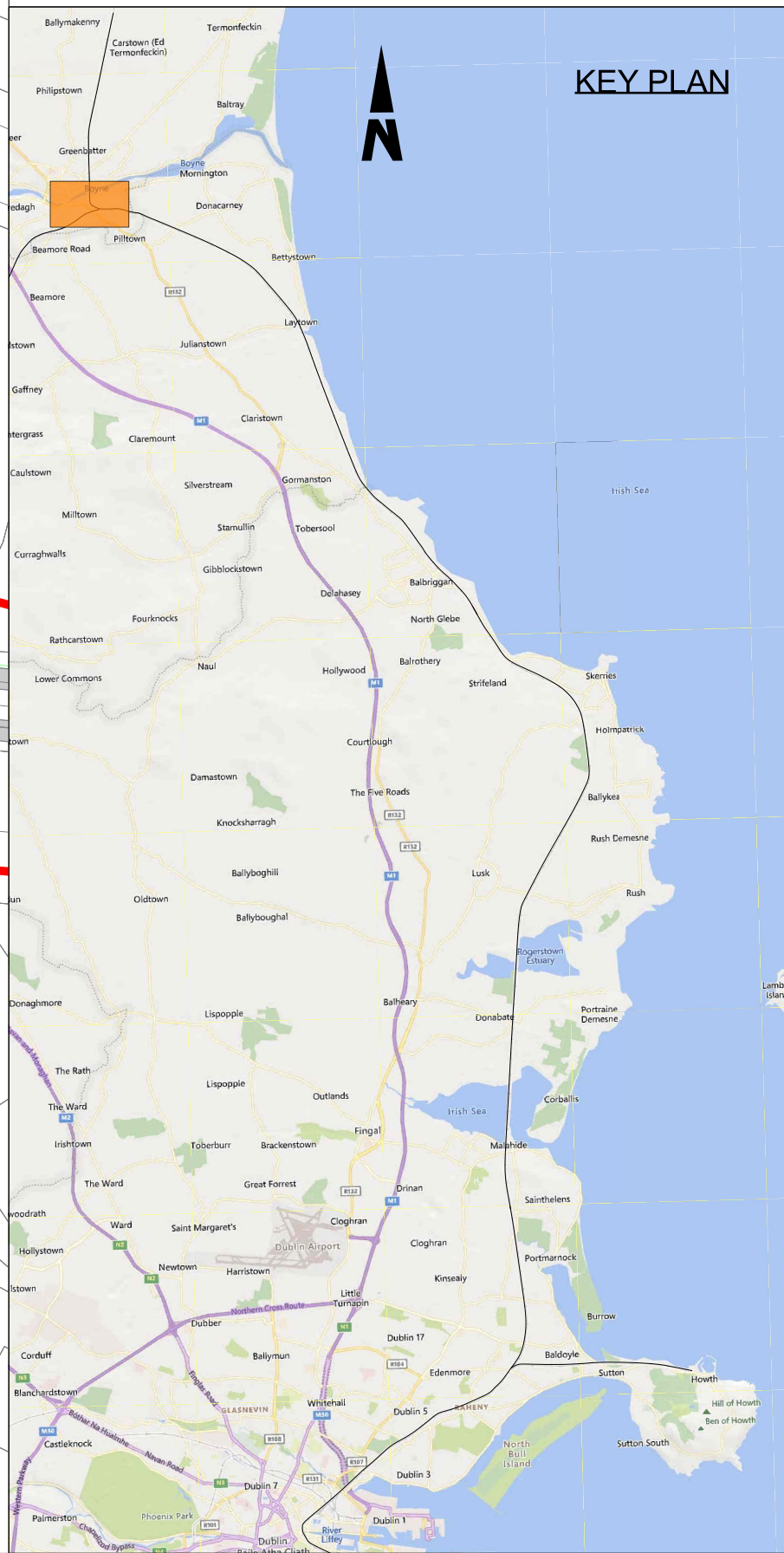
Project Title		DART+ COASTAL NORTH		
Drawing Title				
LINEAR WORKS				
Drawing File Name		Sheet Number	Status	Rev

DO NOT SCALE USE FIGURED DIMENSIONS ONLY



- NOTES
1. DO NOT SCALE FROM THIS DRAWING.
 2. THIS DRAWING SHALL BE READ IN CONJUNCTION WITH THE OTHER DRAWINGS INCLUDED IN THIS SERIES.
 3. LOCATION OF ALL BURIED SERVICES TO BE CONFIRMED PRIOR TO CONSTRUCTION.
 3. ALL DIMENSIONS ARE IN METERS, UNLESS OTHERWISE STATED.
 4. ALL CHAINAGES ARE IN KILOMETERS.
 5. DRAWING TO BE PRINTED IN COLOUR.
 6. ALL LEVELS ARE IN METERS ABOVE ORDNANCE DATUM (MOD) UNLESS OTHERWISE STATED.
 7. THE DART+ COASTAL NORTH PROJECT IS POSITIONED ACCORDING TO THE IRISH TRANSVERSE MERCATOR (ITM) COORDINATE SYSTEM.
 8. EXISTING TROUGHING TO BE REMOVED POST CONSTRUCTION OF PROPOSED TROUGHING.
 9. SELECTED INFRASTRUCTURE INTERVENTIONS DRIVING THE LINESIDE CIVILS DESIGN SUCH AS SUBSTATIONS HAVE BEEN SHOWN FOR INFORMATION ON THESE LINEAR WORKS PLANS. FOR A FULL PICTURE OF ALL INTERVENTIONS ACROSS THE PROJECT, PLEASE REFER TO THE BOOK 1 RAILWAY WORKS PLANS.
 10. OHLE STRUCTURES ARE SHOWN AT INDICATIVE LOCATIONS AT A SPACING OF TYPICALLY 40m TO 50m. OHLE WIRES WILL SPAN BETWEEN THE STRUCTURES.

- LEGEND
- DEVELOPMENT BOUNDARY
 - EXISTING ELEMENTS
 - ELEMENTS TO BE REMOVED
 - PROPOSED UNDER TRACK CROSSING (UTC)
 - PROPOSED TROUGHING
 - PROPOSED ELEVATED TROUGHING
 - PROPOSED FENCING
 - CABLE DUCTS IN PLATFORM
 - PROPOSED OVERHEAD LINE EQUIPMENT
 - TRACKWORK (EXISTING AND PROPOSED)
 - PLATFORM MODIFICATIONS
 - PROPOSED SIGNAL
 - PROPOSED LOCATION CASE



<div>Disclaimer</div> <div><div><div>© Irish Rail (2023). This drawing is confidential and the copyright in it is owned by Irish Rail. This drawing must not be either loaned, copied or otherwise reproduced in whole or in part or used for any purpose without the prior permission of Irish Rail.</div><div>© OpenStreetMap contributors</div><div>Ordnance Survey Ireland and Government of Ireland. All O.S. data used for plans are printed under Copyright Ordnance Survey Ireland 0039723 (OSi Aerial Data or OSi Lidar Data) & 2023 OSi, NMA, 100 (OSi Vector Data). All elevations are in metres and relate to OSi Geoid Height (OSGM02). Main Head as defined by existing Project Control. All Co-ordinates are in Irish Transverse Mercator Grid (ITM) as defined by OSi active GPS station Tallaght College (TLTG).</div></div></div> <div><div><div><div><div><div></div><div>DART+ Coastal North</div></div></div><div><div><div>NTA</div><div>National Transport Authority</div></div><div><div><div></div><div>Tionacall Éireann</div><div>Project Ireland 2040</div></div></div></div></div></div><div><table><tr><th>Rev</th><th>Date</th><th>Dm</th><th>Chk'd</th><th>App'd</th><th>Description</th></tr><tr><td>P01</td><td>12/04/2024</td><td>AS</td><td>EJ</td><td>DB</td><td>PLANNING ISSUE</td></tr><tr><td> </td><td> </td><td> </td><td> </td><td> </td><td> </td></tr><tr><td> </td><td> </td><td> </td><td> </td><td> </td><td> </td></tr><tr><td> </td><td> </td><td> </td><td> </td><td> </td><td> </td></tr><tr><td> </td><td> </td><td> </td><td> </td><td> </td><td> </td></tr></table></div></div>										Rev	Date	Dm	Chk'd	App'd	Description	P01	12/04/2024	AS	EJ	DB	PLANNING ISSUE																									<div>Client</div> <div><div><div><div></div><div>Iarnród Éireann</div><div>Irish Rail</div></div><div><div>Date</div><div>20/10/2023</div></div><div><div>Project Code</div><div>D+WP56</div></div></div><div><div><div>Scale</div><div>As shown</div></div><div><div>Originator Code</div><div>ARP</div></div></div></div> <div><div><div>Drawn</div><div>AS</div></div><div><div>Checked</div><div>EJ</div></div><div><div>Approved</div><div>DB</div></div></div> <div><div><div>OMS Code</div><div>280275-00</div></div></div>		<div>Engineering Designer</div> <div><div><div><div></div><div>ARUP</div></div></div></div> <div><div><div>Project Title</div><div>DART+ COASTAL NORTH</div></div><div><div><div>Drawing Title</div><div>Linear Works Drogheda Freight Sidings</div></div></div><div><div><div>Drawing File Name</div><div>D+WP56-ARP-P4-NL-DR-RO-100052</div></div><div><div><div>Sheet Number</div><div>52 of 58</div></div><div><div>Status</div><div>S3</div></div><div><div>Rev</div><div>P02</div></div></div></div></div>			
Rev	Date	Dm	Chk'd	App'd	Description																																														
P01	12/04/2024	AS	EJ	DB	PLANNING ISSUE																																														

DO NOT SCALE USE FIGURED DIMENSIONS ONLY